

Blackford, M. Bret

From: M Bret Blackford <bret_blackford@yahoo.com>
Sent: Tuesday, December 21, 2021 9:48 AM
To: Bret Blackford; Blackford, M. Bret
Subject: 12.21.2021: McKnight Church - Auditorium Stage Lighting and Switching
Attachments: MX-AudLightSwitch.jpg; MX-AuditoriumLights.jpg

CAUTION: This email originated from outside of the organization. Do not click links or open attachments unless you recognize the sender and know the content is safe.

MEMO to FILE

----- Forwarded Message -----

From: Sys Admin <bblackford@mcknightcrossings.org>
To: "info@elite1988.com" <info@elite1988.com>; "janice@elite1988.com" <janice@elite1988.com>
Cc: Sys Admin <bblackford@mcknightcrossings.org>; Jeannie Britzmann <jbritzmann@mcknightcrossings.org>; mBret Blackford <bret_blackford@yahoo.com>
Sent: Tuesday, December 21, 2021, 07:40:15 AM CST
Subject: McKnight Church - Auditorium Stage Lighting and Switching

Jeff Erickson
[Elite Technology Solutions](#)
1250 Jungermann Road
St. Peters, MO 63376
636-939-4474
info@Elite1988.com
[Janice@elite1988.com](#)

Jeff,

This email is sent to follow-up on the conversation Jeannie Britzmann and I had with you yesterday, 12.20.2021, regarding the lighting project at the McKnight Crossings Church of Christ (<https://www.mxchurch.org/>). Per our conversation, and email below, we would like Elite to give us a bid to upgrade our lighting control and to add stage lighting. The bid should also indicate if any work might extend over a Sunday and possibly impact our use of the auditorium for our weekly Sunday worship service.

Regarding lighting control – it would be good to get pricing on a basic control panel as well as one that provides more functionality like presets for events like “Sunday Morning” or “Wedding”, etc. My preference is a more programmable unit but we need to understand pricing differences between a basic light controller and something more programmable. You mentioned replacing the controller can be started before the stage lighting, which is agreeable to us.

Regarding Stage Lighting – we like your suggestion of adding stage specific lighting in phases. Initially we can add lighting to improve the on-line video quality and allow flexibility in the system design that additional lighting can be added later if needed. The hope is to take our current auditorium stage lighting, which is quite poor and gets a “C-“ grade, to something that gets us closer to a “B”. We can then decide if we want/need to tweak the lighting more and bring quality up to an “A”. This makes sense and works for us and is a quicker and cheaper path than doing a full engineering review of the lighting needs.

Attachments:

- [MX-AudLightSwitch.jpg](#) – this is the current push knob system used to control the auditorium lights. We want to upgrade this.
- [MX-Mezzanine-lights.jpg](#) – this is an architectural diagram with the auditorium lights. I have added notes to show how the lights are switched. The red letter-number combination indicates which switch setting turns on/off the set of lights. E.g., **R1** is the right knob switch set to 1.

Additional notes regarding auditorium lighting:

- Previous incandescent bulbs have been replaced by LED. I mention this because each switch/circuit now has additional capacity, should you need to use for stage lighting.
- We currently do not use some of our lighting and these circuits can be repurposed if needed. Here are lights which are not needed or can be repurposed if needed: **L2, L3, L5, L7**.

Jeannie Britzmann and I look forward to receiving your bid and hope to work with you on the details on the project after the holidays. Let us know if you have any questions or need additional information to assist with your bid proposal.

--- Bret

M Bret Blackford
bBlackford@McKnightCrossings.org

=====

----- Forwarded message -----

From: **Jeannie Britzmann** <jbritzmann@mcknightcrossings.org>

Date: Wed, Dec 8, 2021 at 2:13 PM

Subject: House and Stage Lighting

To: Janice Wilson <janice@elite1988.com>

Hello Janice,

We had a meeting last night to discuss this project. We do see this project as being completed in stages. We have given the green light to move forward with stage 1 and 2 (house and stage lighting), although changed in scope from our original discussion (see below). While you are completing stage 1 and 2 we will be actively making decisions about the remaining stages; projector/screen, streaming camera, sound stage lighting and stage backdrop.

Here is what we decided. I would like to have a telephone conversation with Jeff after he reads this so we can be sure we are on the same page.

Update lighting control panel

The old analogue push dial switches need to be updated with a modern switch panel or a programmable interface. We would like to see pricing on a couple options. We do not need anything wifi and mobile enabled.

House Lighting

We are fine with the brightness of the existing house lights. It is acceptable if lights do not dim but they still need to have the current switching pattern. That is, lights that currently switch on together should remain on/off together with the new control panel.

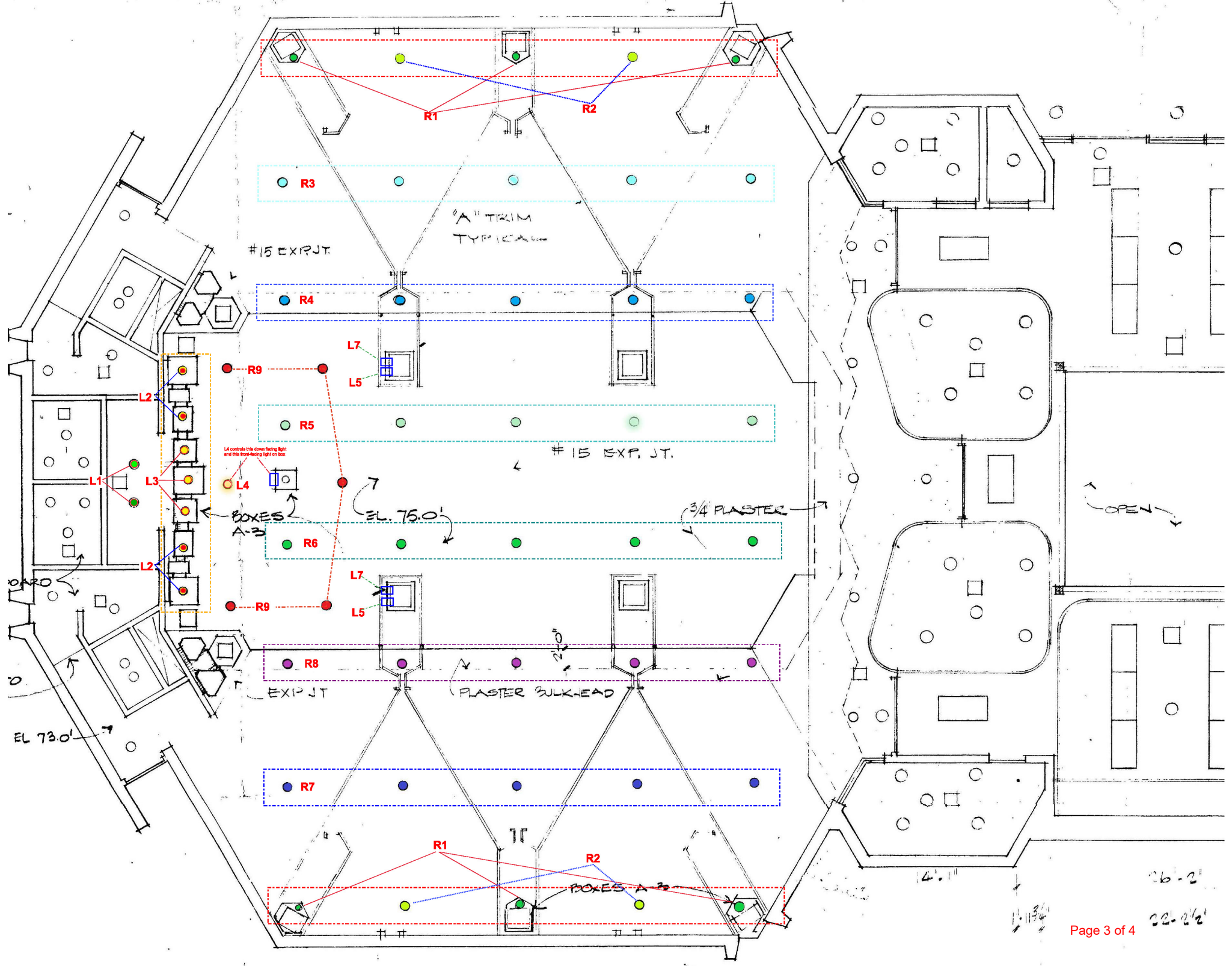
Stage Lighting

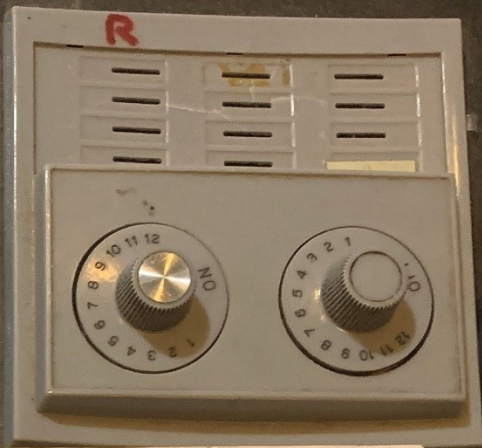
We would like additional lighting just for the stage, particularly to improve our online presence. This can be track lighting, or additional stage lighting at various places directed towards the stage. These stage lights should be controlled from the new control panel. As you think about how/where to place these lights, you can assume we will proceed with the projector and screen that is suggested in your original proposal.

Thanks for your efforts as we work together to complete this comprehensive project.

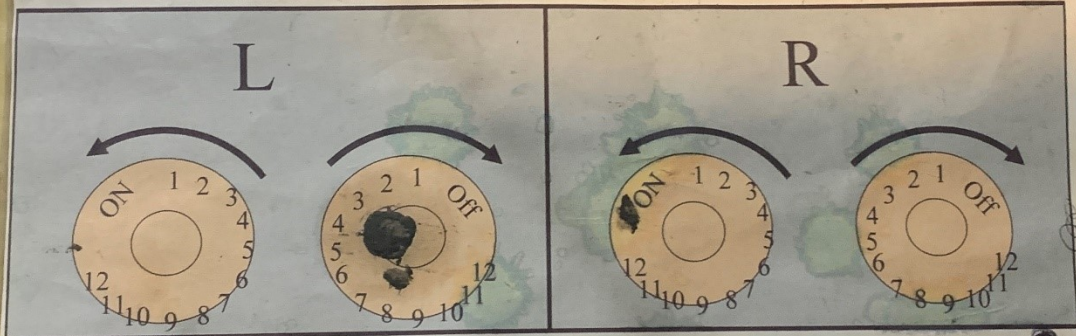
--

Jeannie Britzmann
Associate Minister
McKnight Crossings Church of Christ





To Turn Auditorium Lights on



Turn and Push Dials In at the same time

- 1 - Baptistry Light
- 2 - Front (4) Lights (outer left wall)
- 3 - Front (3) Lights (middle Stage Lights)
- 4, 5 - Flood Lights
- 6 - Pulpit Light
- 8 - 12 No Lights
- 7 - FLOOD LIGHT (FRONT OF MIC VENTS)

- 1, 2 - Both Sides - 1st, 2nd Row of Lights
- 3, 4 - Right Side of Auditorium.
- 5, 6 - Middle of Auditorium
- 7, 8 - Left side of Auditorium
- 9 - Front Teacher Light in Auditorium
- 10, 11 - Back Light Foyer
- 12 - Back Light (by Door Entrance AUD)