

MX Aud. Lighting - Elite proposal v2

From: Sys Admin (bblackford@mcknightcrossings.org)

To: jeff@elite1988.com

Cc: bret_blackford@yahoo.com; jbritzmann@mcknightcrossings.org; janice@elite1988.com

Date: Tuesday, February 22, 2022, 12:44 PM CST

Jeff Erickson, President
Elite Technology Solutions
Office: 636-939-4474
Cell: 314-324-6330
www.elite1988.com

Jeff,

Thank you for your proposal (attached). The attached document - ***Elite bid follow-up*** - has a few questions we are hoping you can answer to help Jeannie Britzmann and me prepare for next steps.

Feel free to call if you have any questions.

--- Bret

Bret Blackford
314/402-7086: mobile



Elite bid follow-up.pdf
260.6kB



Elite.McKnight_Crossings.Lighting Update V2.0.2-17-22.P-354 v2.pdf
5.6MB



MX-Auditorium Blueprint.pdf
3MB



February 22, 2022

Jeff Erickson
Elite Technology Solutions
1250 Jungerman Road
St. Peters, MO 63376

Jeff,

Thank you for your proposal (attached), which was written to address our requirements, which were part of our 12/21/2021 email. Excerpt below:

... we would like Elite to give us a bid to upgrade our lighting control and to add stage lighting. The bid should also indicate if any work might extend over a Sunday and possibly impact our use of the auditorium for our weekly Sunday worship service.

Regarding Stage Lighting – we like your suggestion of adding stage specific lighting in phases. Initially we can add lighting to improve the on-line video quality and allow flexibility in the system design that additional lighting can be added later if needed. The hope is to take our current auditorium stage lighting, which is quite poor and gets a “C-” grade, to something that gets us closer to a “B”. We can then decide if we want/need to tweak the lighting more and bring quality up to an “A”. This makes sense and works for us and is a quicker and cheaper path than doing a full engineering review of the lighting needs.

After reviewing the proposal there are some questions.

House Lighting:

1. The main controller: [Crestron CP3 Automation/Control Processor](#) – came out about 10 years ago. This system is much much better than what we currently have but is there any newer technology we should consider? Possibly something easier to program (doesn't require C#)? I appreciate using used equipment but if there is better technology that could make our lives easier 5-10 years down the road I'd like to understand options, even for a few dollars more
2. Programming: We have some capable programmers and I would like to have Elite do minimal programming and allow McKnight to learn the system and do the bulk of the programming. I think this is C#, correct? We can discuss.
3. Electrical Labor: McKnight has a couple skilled electricians. Are there specific areas you can point out where we could use internal labor to save some cost? I also want to make sure this does not slow or impede any Elite installation time.
4. I think we will only want/need one C2N-CBD-P-B-S Cameo Keypad

Stage Lighting:

1. We would like an idea of where additional stage lighting would be mounted and directed marked on the attached auditorium blueprint (also available at slide 19 here).
 - a. Location of 7 lights (if we go that route)
 - b. Location of 5 lights (if we go that route)
2. You verbally mentioned adding two (2) additional 20amp circuits for the new stage lighting. If this is correct please add this information to the bid/proposal. We can discuss.
3. You verbally discussed that additional lights could be added and managed by controller (scalability of system). We may want some mention of this in bid/proposal document.
4. Would we want to have two (2) of the lights be color adjustable?
5. What would be the additional cost of switching two (2) of the lights for motorized movable lights and could controller noted in bid manage such lights? We do not consider this key to the project but would like to know cost differentials.

A few additional thoughts:

With our goal of improving our stage lighting for in-person and on-line video from a C- to a B grade (not looking for highest quality lighting) I would like to start with five (5) stage lights with two (2) of them RGBWW. However, we are trusting in the technical background and experience of Elite to guide us in this decision. We want the system to be scalable to allow for future upgrades but we do not want to have inadequate lighting when we finish this implementation. From what I have been able to read on-line, given our stage size and auditorium layout five (5) sufficiently powerful spotlights should be adequate for our initial needs, but please push back and challenge me on this if needed.

We would also like the proposal to mention that Elite will work with MX to avoid Sunday auditorium disruption.

Here are some administrative items we will need to address prior to starting any of the work associated with this bid/proposal:

- W-9
- Proof of insurance
- Lien waver upon MX payment
- MX has a relationship with Nu Way Rental and they could be used for lift rental.

You can respond to our questions via email or Jeannie Britzmann and I can schedule a conference call to discuss. Let us know how you prefer to proceed. We look forward to working through these questions with Elite as we prepare to contract on the project and start scheduling next steps!

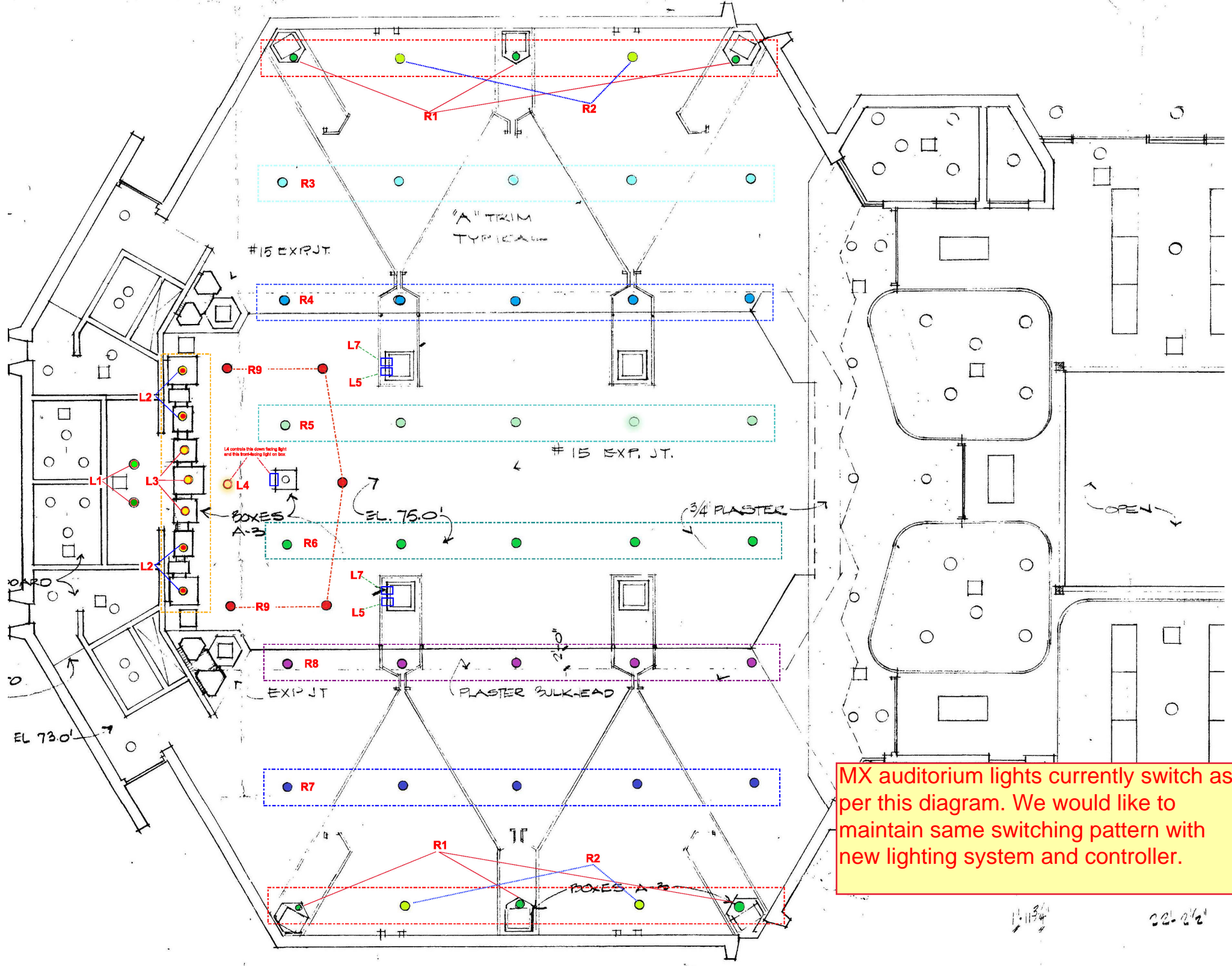
Regards,

--- *Bret*

Bret Blackford

bblackford@mcknightcrossings.org

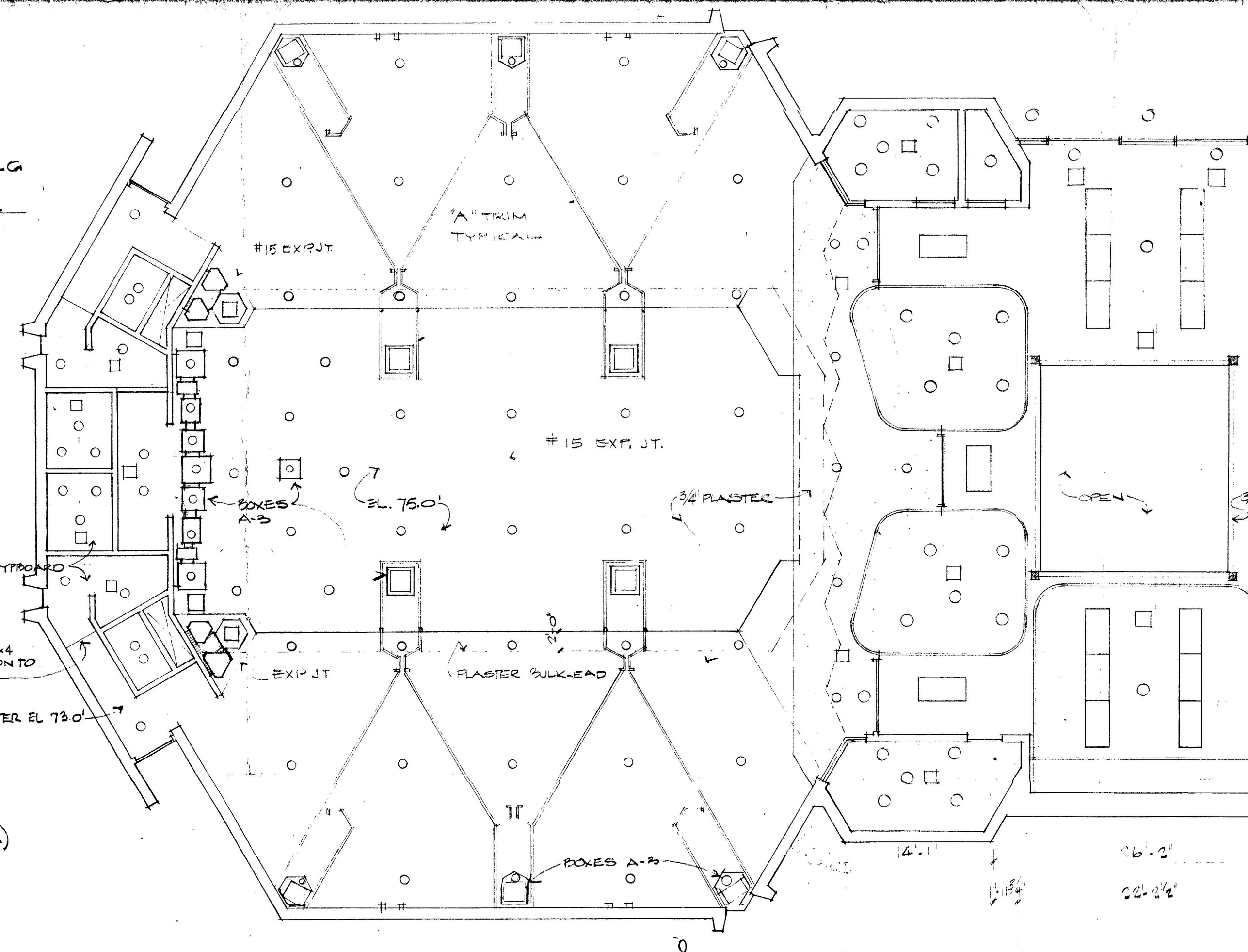
314-402-7086: mobile



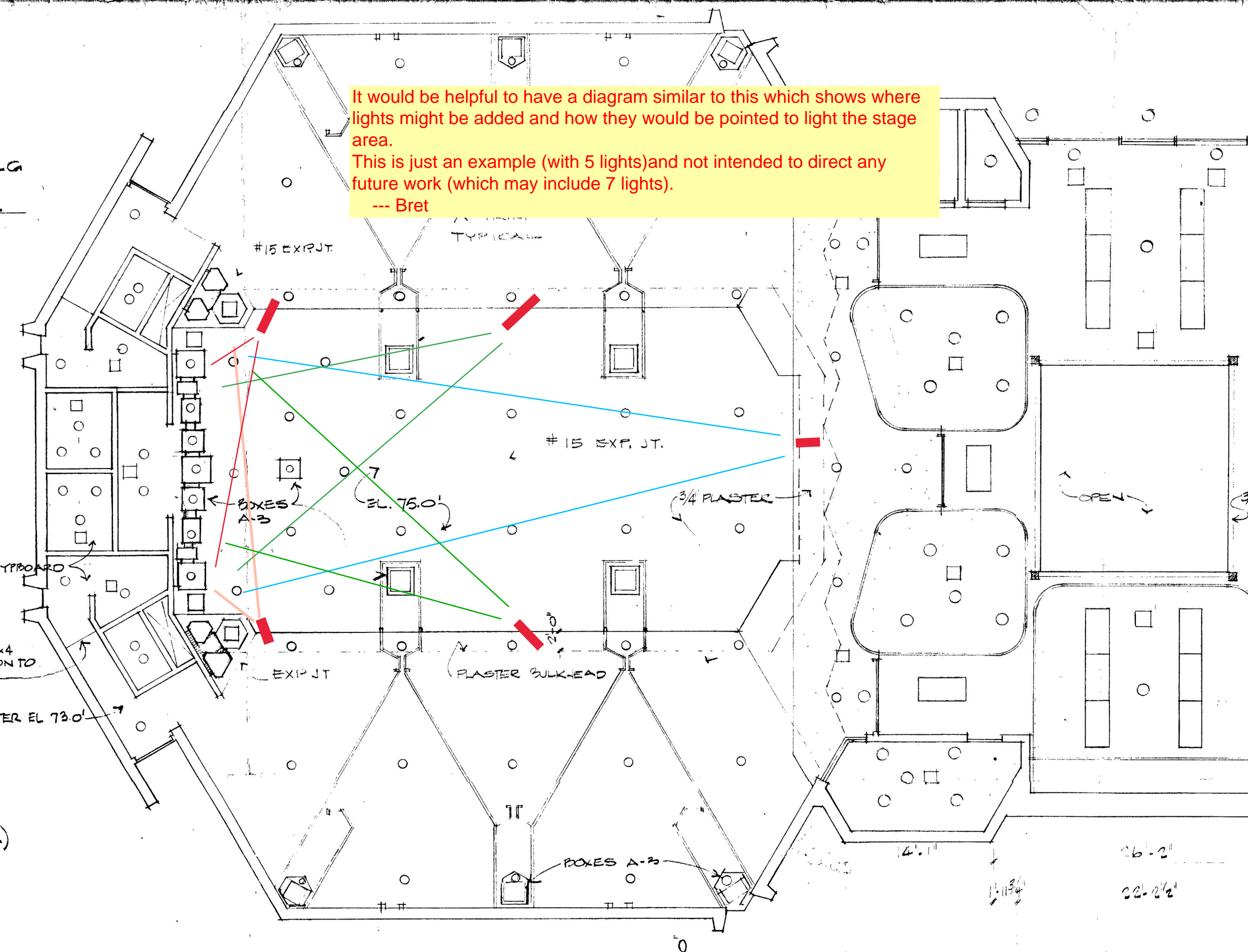
MX auditorium lights currently switch as per this diagram. We would like to maintain same switching pattern with new lighting system and controller.

11/3/14

22.2/2



It would be helpful to have a diagram similar to this which shows where lights might be added and how they would be pointed to light the stage area.
This is just an example (with 5 lights) and not intended to direct any future work (which may include 7 lights).
--- Bret



Proposal to:

McKnight Crossings Church of Christ

For:

Lighting Updates

February 17, 2022

Elite Technology Solutions



1250 Jungermann Road, St Peters, MO 63376

Technology that works for you.



ELITE
TECHNOLOGY SOLUTIONS

About Us

Elite Technology Solutions is a professional, design-build, systems integration firm. We apply our creativity and competency to produce beautiful, reliable and easy-to-use systems for our church, educational, museum, business and luxury residential clientele.



Our History

Elite was established in 1988 by Jeff Erickson. At the start, Elite focused primarily on sound reinforcement systems for churches. We then added video display systems and expanded our market to include schools and businesses. Most of these institutions had no trained technical staff, so it became vital that we make these systems easy-to-use. Integration and control became a central theme for all of our systems.



Our Services

Elite has been serving the marketplace now for over 30 years. We provide comprehensive A/V related technology solutions starting from initial consultation and design, through installation and commissioning, to training the staff. We follow up with great service and future upgrades.



Our Team

Jeff Erickson heads up a talented team of professionals that bring a unique mix of competency, care and passion to our industry. We have many years of experience in multiple disciplines allowing us to bring you creative designs and quality installations. Our people make the difference and our clients enjoy the benefits of a team that listens and responds.



Our Goal

Happy, satisfied clients are our goal. Whether your project is large or small, you deserve the time and attention to assure a great outcome. Great systems that are reliable, easy-to-use and easy-to-own make satisfied customers. And once your system is in, great service and followup make the difference.



WARRANTY

All materials and workmanship will be covered by a one-year warranty as follows:

1. All new equipment sold by Elite will be covered by the manufacturer's warranty, which may be longer or shorter than the one-year installation warranty.
2. Any failure of the system (or any part of the system) due to defects in the installation will be corrected by us at no additional cost to you for the warranty period.
3. This warranty is void if any party other than us should tamper with or attempt to repair the system under question.
4. This warranty does not cover any losses or damage incurred on the owner because of any failure of this system to operate, other than covered repairs to the system itself.
5. This warranty does not cover damage incurred to the system or any part thereof by abuse, misuse or negligence.
6. This warranty does not cover damage done to the system by fire, flood, lightning or any other acts of God.
7. This warranty applies only to the system as installed by us at the location we installed it. If the system is moved or modified the warranty is void.
8. This warranty does not cover new/used equipment provided by the customer that we integrate with this system.
9. Unless otherwise specified somewhere else, any used equipment provided by Elite carries a 90-day warranty. We will repair or replace, at our option, any defective equipment covered by this warranty during the 90 days.
10. Apple Products are warranted by Apple. Elite assumes no warranty obligations for Apple products provided with this system.
11. Elite assumes no liability or responsibility for the support or functionality of software provided by equipment manufacturers or others used to create, program, manage, control or otherwise support this system.

HOUSE LIGHTING

SCOPE

Elite is proud to offer you this quote to update the 1970's era lighting controls in your Church. Features include:

1. Replace existing latching relays with modern lighting contactors/relays in new enclosures.
2. New relays will be controlled via a programmable control processor with ethernet based remote relay modules.
3. Control will be via a color touch screen and wall-mount keypads.
4. Control processor will be housed in the existing equipment rack and use existing power.
5. All programming will be customized to meet your needs.
6. Programming includes advanced interface with a scheduler (scenes initiated by date and time of day), a scene setter (allows client to easily create and name scenes) and scenes for all keypad buttons.
7. Training on use and care of the system is included as well as program debugging.

HOUSE LIGHTING

| QTY | DESCRIPTION | PRICE | LABOR | TOTAL |
|-----------------------------|---------------------------------------------------------------------------------|----------|------------|-------------------|
| 1 | Elite Varies Crestron CP3 Automation/Control Processor, Used | \$495.00 | \$0.00 | \$495.00 |
| 1 | Elite Varies Crestron 7" Color Touch Screen, Used | \$395.00 | \$0.00 | \$395.00 |
| 3 | Crestron CEN-IO-RY-104 Wired Ethernet Module with 4 Relay Ports | \$295.00 | \$0.00 | \$885.00 |
| 2 | Crestron C2N-CBD-P-B-S Cameo Keypad, Standard Mount, Black Smooth | \$295.00 | \$0.00 | \$590.00 |
| 1 | Elite Custom Lighting Control Relay Panel, 12 Relays | \$455.00 | \$0.00 | \$455.00 |
| 1 | Elite Custom Lighting Control Relay Panel, 8 Relays | \$355.00 | \$0.00 | \$355.00 |
| 1 | Elite Misc. Bulk cable, connectors, hardware, etc. for installation (estimated) | \$250.00 | \$0.00 | \$250.00 |
| 16 | Elite Installation Installation Services (estimated) | | \$95.00 | \$1,520.00 |
| 14 | Elite Programming Programming Services (estimated) | | \$175.00 | \$2,450.00 |
| 1 | Elite Electrical Work 3rd party electrical contractor (estimated) | | \$1,495.00 | \$1,495.00 |
| HOUSE LIGHTING TOTAL | | | | \$8,890.00 |

STAGE LIGHTING

SCOPE

Elite is proud to offer you this stage lighting package to significantly improve the quality of the lighting on your stage. Features include:

1. Robust, professional fixtures with very bright 250 watt LED.
2. Fixture available in a tunable white (adjustable from 2700 to 6500) or as a Quad LED RGBWW for color and white.
3. High CRI (96-97).
4. Lights are controlled via DMX. (3-8 channels each, depending fixture type and configuration).
5. Lens are available in 19, 26 and 36 degrees.
6. Fixtures available in white or black.
7. Fixtures will be placed along the existing recessed alcoves out in front of the stage.
8. Some electrical work will be required to provide power to the stage lighting. Electrical work is an estimate.
9. Stage lighting control will be integrated into the house lighting system. Additional control via theatrical lighting methods can be added in the future.
10. Programming to include scenes and keypad integration (see house lighting).

STAGE LIGHTING

| QTY | DESCRIPTION | PRICE | LABOR | TOTAL |
|-----------------------------|---------------------------------------------------------------------------------------------------------------|------------|------------|--------------------|
| 7 | Mega Systems 7060-VW2 DRAMA PROFILE LED VW2, 250W VARIABLE WHITE LED, CRI 97, 5 PIN XLR, 100-240V AC 50/60 HZ | \$1,499.00 | \$0.00 | \$10,493.00 |
| 1 | Mega Systems 7060-LENS-19 DRAMA PROFILE LED, 19° LENS | \$229.00 | \$0.00 | \$229.00 |
| 2 | Mega Systems 7060-LENS-26 DRAMA PROFILE LED, 26° LENS | \$229.00 | \$0.00 | \$458.00 |
| 4 | Mega Systems 7060-LENS-36 DRAMA PROFILE LED, 36° LENS | \$229.00 | \$0.00 | \$916.00 |
| 1 | Entec 71020 DIN-ODE Mk2 Ethernet Gateway | \$295.00 | \$0.00 | \$295.00 |
| 1 | Elite Misc. Bulk cable, connectors, hardware, etc. for installation (estimated) | \$400.00 | \$0.00 | \$400.00 |
| 20 | Elite Installation Installation Services (estimated) | | \$95.00 | \$1,900.00 |
| 16 | Elite Programming Programming Services (estimated) | | \$175.00 | \$2,800.00 |
| 1 | Elite Electrical Work As performed by 3rd party electrical contractor (estimated) | | \$2,495.00 | \$2,495.00 |
| STAGE LIGHTING TOTAL | | | | \$19,986.00 |

ACCEPTANCE

ACCEPTANCE

PAYMENT SCHEDULE

Equipment & sales tax (if applicable) prepaid at the time of execution of this Proposal. Labor is due upon completion. All amounts from invoices not paid within fifteen (15) days are subject to a finance charge of one and one-half percent (1.5%) per month (annual rate of eighteen percent-18%). In the event that any unpaid invoices for equipment, labor or any other services provided are placed with an attorney for collection then you will be responsible for all reasonable attorneys' fees and expenses of collection. This Proposal is valid for 30 days. NOTE: 3% processing fee will be added for credit card payments.

| | |
|-------------------------------------|--------------------|
| EQUIPMENT TOTAL | \$16,216.00 |
| INSTALLATION | \$7,410.00 |
| PROGRAMMING | \$5,250.00 |
| LABOR TOTAL | \$12,660.00 |
| SUBTOTAL | \$28,876.00 |
| TOTAL SALES TAX (TAX EXEMPT) | \$0.00 |
| PROJECT TOTAL | \$28,876.00 |

DRAMA PROFILE Q2W

DESCRIPTION

The Drama Profile Q2W, is a High-CRI, professional theatrical fixture. With a 250W quad red, green, blue & warm white LED, the Q2W allows you to create colorful, cool and warm white projections within one fixture.

The high 96 High CRI and 3099K on warm white allows you to project a soft warm effect and produce radiant rendering capabilities.

It has the option of a 19°, 26°, and 36° lens barrel that can create versatile, flat, soft and diffused edges, making it perfect for theater use. This ideal fixture will suit your needs even better with the options of a white or black housing.



VERY BRIGHT

The Drama Profile Q2W, is a High-CRI, professional theatrical fixture. With a 250W RGBWW LED, the unit can be used for small to mid size applications.



HIGH-CRI

The high 96 CRI on warm white allows you to project a soft warm effect and produce radiant color rendering capabilities.



COLOR TEMPERATURE

With a quad red, green, blue & 3099K warm white LED, the Q2W allows you to create colorful, cool and warm white projections within one fixture.

SOURCE

• LED TYPE: 250W Quad Red, Green, Blue & Warm White

OPTICAL SYSTEM

• LENS OPTIONS: 19°, 26° & 36

EFFECTS

• COLOR TEMP: 3099K On Warm White
 • CRI: 96

CONTROL & PROGRAMMING

• DISPLAY: STAND ALONE, MANUAL SETTING
 • PROTOCOL: DMX 512
 • DMX CHANNELS: 3 CHANNEL MODE

THERMAL & RATINGS

• MAX AMBIENT TEMP: 43°C (110°F)
 • MAX SURFACE TEMP: 60°C (140°F)
 • MAX OPERATING TEMP: 40°C (104°F)
 • IP RATING: IP20

ELECTRICAL & CONNECTIONS

• POWER CONNECTION: POWERCON TYPE PANEL INPUT
 • DMX CONNECTORS: 5 PIN XLR CONNECTORS IN AND OUT
 • POWER SUPPLY: AUTO SWITCH 100V-240V 50/60 HZ
 • POWER CONSUMPTION: WATTS: 231 AMPS: 1.95

RIGGING:

• INSTALLATION SYSTEM: MOUNTING YOKE

ORDERING INFO:

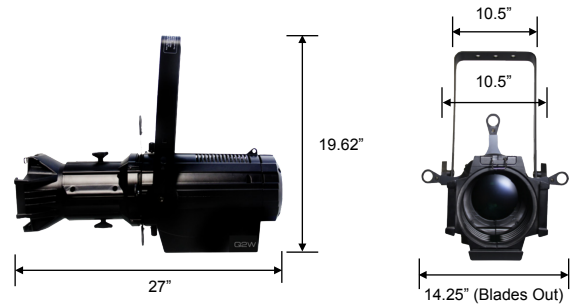
• DRAMA PROFILE Q2W **PART NUMBER:** 7060

INCLUDED ITEMS:

• POWER CABLE

DIMENSIONS:

• FIXTURE SIZE: 14.17" X 13.31" X 25.12"
 • FIXTURE WEIGHT: 56 lb (25 kg)
 • PACKAGED SIZE: 30.5" X 18.5" X 21.5"
 • PACKAGED WEIGHT: 66.2 lb (30 kg)



*SPECIFICATIONS SUBJECT TO CHANGE

PHOTOMETRICS @ 10ft 19°:

WARM WHITE:

| | |
|-----|--------|
| CCT | 3099 K |
| CRI | 96 |
| Lux | 4767.5 |
| fc | 443.1 |

RED:

| | |
|-----|--------|
| CCT | 2413.3 |
| CRI | 224.3 |

GREEN:

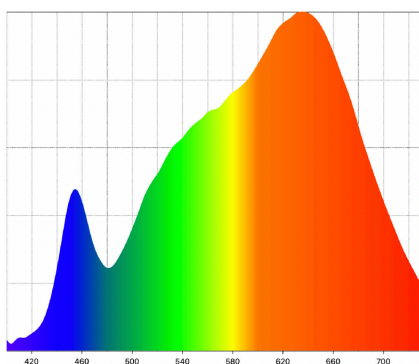
| | |
|-----|--------|
| CCT | 4826.1 |
| CRI | 448.5 |

BLUE:

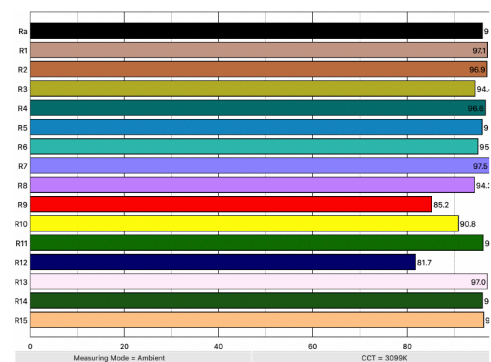
| | |
|-----|--------|
| CCT | 1066.2 |
| CRI | 99.1 |

COLOR RENDERING WARM WHITE:

CRI (Ra): 96.0
 CCT: 3099K



CRI:



DRAMA PROFILE ^{VW2}



DESCRIPTION:

The Drama Profile VW2 is a very bright, high CRI LED fixture that is part of the New Mega-Lite Drama Profile Series. This unit has three lens options including 19°, 26° & 36° and is equipped with a 250-Watt LED making it very bright and long lasting. The Drama profile VW2's quality light source is able to accurately render color thanks to its 97.1 CRI. With a color temperature ranging from 2709K to 6487K it allows for more natural light design possibilities.

HIGH CRI



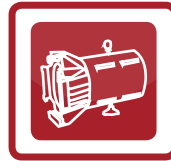
97.1 CRI

VERY BRIGHT



250 WATT LED

LENS OPTIONS



19°, 26° & 36°
LENS OPTIONS

COLOR TEMPERATURE



WHITE COLOR FROM
2709K TO 6487K

KEY FEATURES:

SPECIFICATIONS:

| | |
|-----------------------------|-------------------------------------------------------------|
| FIXTURE PART NUMBER: | 7060VW2 - Drama profile VW2 |
| COLOR TEMP: | 2709 K - 6487 K |
| CRI: | 97.1 |
| LED TYPE: | 250W Variable White |
| DMX CONNECTORS: | 5 pin XLR connectors in and out |
| FASTENING SYSTEM: | Mounting Yoke |
| POWER SUPPLY: | Electronic 100 - 240V 50/60 HZ |
| LENS OPTION: | 19, 26, 36 |
| GOBO SIZE: | Gobo Size: 85mm Image Size:65mm |
| POWER CONSUMPTION: | Watts: 230W Amps: 1.98 |
| BALLAST: | Electronic |
| PROTOCOL: | DMX 512 |
| DISPLAY: | Stand Alone, Manual Setting |
| DMX MODES: | 3 Mode operation |
| MODE 1: | 3 Channel Dimmer, CTO, Strobe |
| MODE 2: | 4 Channel Dimmer, Warm White, Cool White, Strobe |
| MODE 3: | 5 Channel Dimmer, Warm White, Cool White, Strobe, Dim Curve |

PHOTOMETRICS:

| WARM WHITE : | |
|--------------|---------|
| CCT | 2709 K |
| CRI | 96.3 |
| Lux | 63320.6 |
| fc | 5884.8 |

| COOL WHITE : | |
|--------------|---------|
| CCT | 6487 K |
| CRI | 96.3 |
| Lux | 79425.0 |
| fc | 7381.5 |

| WARM AND COOL WHITE : | |
|-----------------------|----------|
| CCT | 4179 K |
| CRI | 97.1 |
| Lux | 126805.0 |
| fc | 11784.8 |

PHYSICAL SIZE:

FIXTURE:

Size: 14.25" x 37" x 19.62"
Weight: 24 lb

PACKAGED FOR SHIPPING:

Size: 26.25" x 13" x 13.5"
Weight: 25.5 lb

